

# Frances Andrew

## Site Furnishings Ltd



## Village Series

V7-5

V7-51

### General Specifications:

**Wood:** Clear Select Cedar. Wood members 3 1/2" (8.9cm) x 3 1/2" (8.9 cm) with 1/4" (0.63cm) radius on edges and ends. Top and front members are 1" (2.54cm) radius bullnose. Cedar is smooth sanded and CCA pressure treated.

**Metal:** Mild steel, wheel-abraded to bare metal, then precisely fabricated to final shape. The metal is coated with Polyester, electrostatically applied, and baked at a high temperature to produce a "mar-resistant" finish.

**Hardware:** An exclusive nut design and bolt-through construction create a single, solid unit. A special wrench for vandal-resistant hardware is provided with each bench. All hardware is professionally finished with our baked-on Polyester Powder Coating.

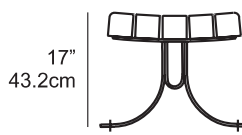
### Options:

**Metal Colors:** Make your choice from one of eighteen standard paint colors. Or, for an additional charge, choose from one of over 160+ custom paint colors. Standard color chips and custom color charts are available upon request.

### Accessories:

To give your project that professional finish, may we suggest the addition of our Series 19 receptacles. For a complete listing of our receptacles, and other furnishings, please refer to the respective areas in our catalog.

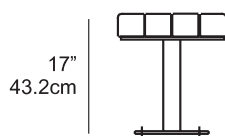
19 1/2" 49.5cm



1 1/4" 17" 1 1/4"  
3.17cm 43cm 3.17cm

V7-52

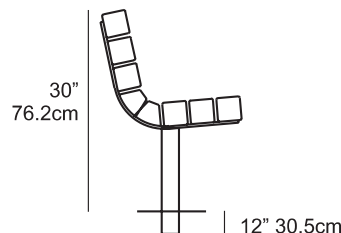
15 1/2" 39.4cm



3 3/4" 8" 3 3/4"  
9.5cm 20cm 9.5cm

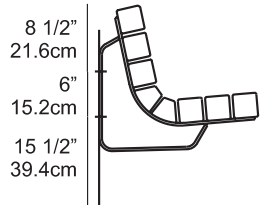
V7-61

21" 53.3cm



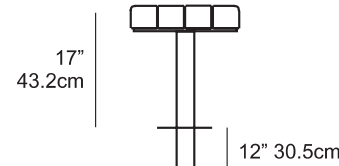
V7-64

24 5/16" 61.8cm



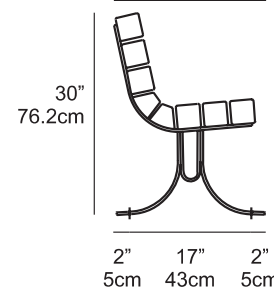
V7-6

15 1/2" 39.4cm



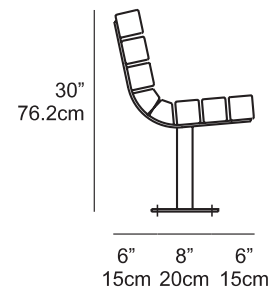
V7-62

21" 53.3cm



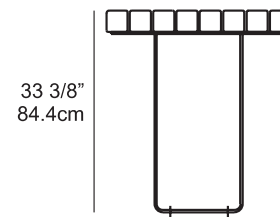
V7-62

21" 53.3cm



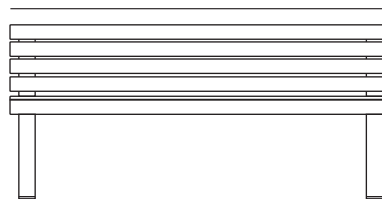
V7-72T

30 5/8" 77.8cm



10 1/2" 9 3/4" 10 1/2"  
26.7cm 24.8cm 26.7cm

70" 177cm



58" 147cm